

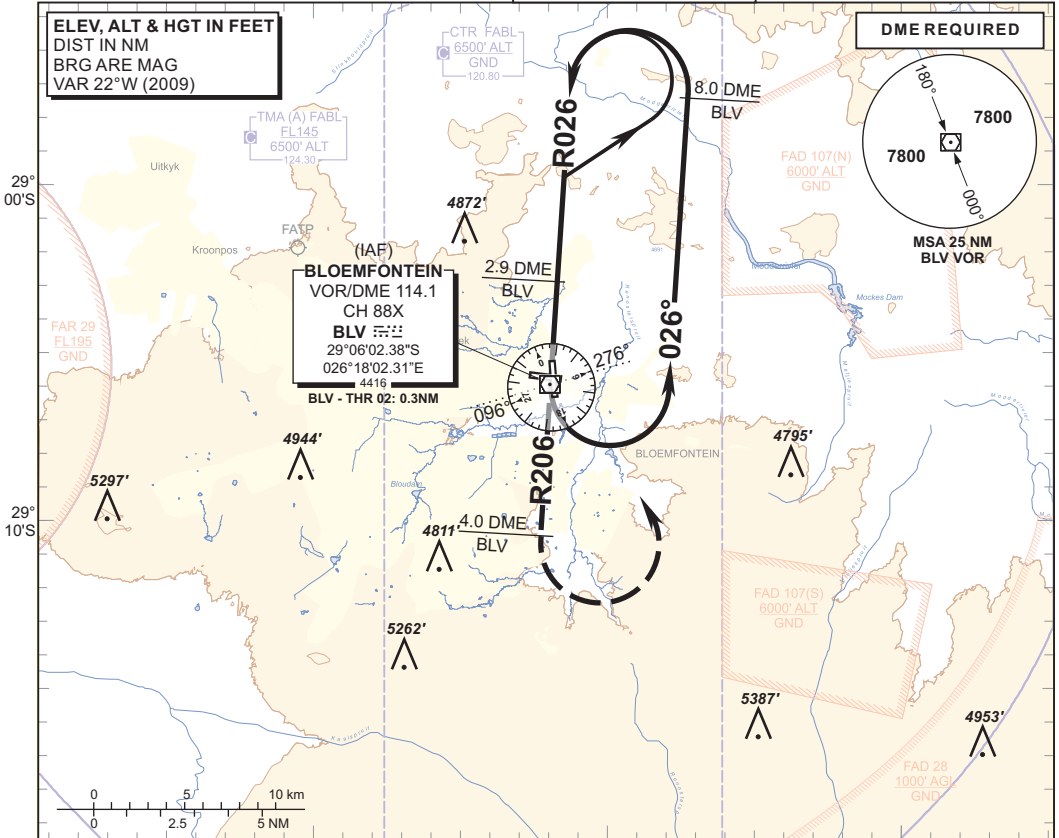
INSTRUMENT AERODROME ELEV 4457'
APPROACH CHART
 HEIGHTS RELATED TO
 THR RWY 20 - ELEV 4421'

ATIS 126.45
 TWR 120.80
 APP 124.30

BLOEMFONTEIN
 (BRAM FISCHER INTL)
VOR RWY 20
 CAT A - D

ELEV, ALT & HGT IN FEET
 DIST IN NM
 BRG ARE MAG
 VAR 22°W (2009)

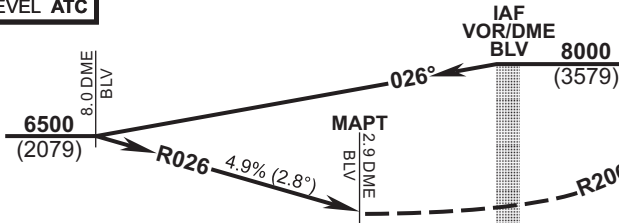
DME REQUIRED



DIST to RWY 20	6	5	4	3		
ALT (HGT)	5910 (1489)	5620 (1199)	5320 (899)	5030 (609)		

TRANSITION ALT 8000
TRANSITION LEVEL ATC

INA ALT: 8000



MISSED APPROACH:
 Track away from 2.9 DME BLV through BLV on R206 (OUBD) and climb to 8000' ALT. At 4.0 DME BLV turn left and return to BLV.

THR ELEV 4421
 NM to/from THR RWY 20

	8	7	6	5	4	3	2	1	0
--	---	---	---	---	---	---	---	---	---

					GS	KT	80	100	120	140	160					
OCA (H)					A	B	C	D	8.0 DME BLV - THR	M:S	5:09	4:08	3:26	2:57	2:35	
Straight-in Approach					VOR/DME	4998 (577)	4998 (577)	4998 (577)	4998 (577)	Rate of descent	FPM	393	492	590	688	787
Circling					Circle to land at the discretion of the pilot in command.											

NOTE:
 1. Procedure turn approach applicable only within 30° of the outbound heading. Use phraseology "Request procedure turn approach".

CHANGE: BLV Coordinates